



**Isaac | DE**

**A no code Big Data platform complete of tools and services for the installation, configuration, use, management and monitoring of an entire NoSQL environment.**



# Make the most of **NoSQL power**, while defeating the complexity of database management.

Isaac DE allows to create in a few, simple steps your own NoSQL ecosystem, to store and control all data that matter for your business. Connect Isaac DE to existing devices, business solutions, etc. to instantly start exploiting critical information that will help you make more profitable decisions.

## Isaac DE platform



**Fast installation and configuration**



**Smart data management tools**



**Real Time monitoring**



**Dynamic connectors**



**Easy integration**

The smart web framework offers the possibility to drastically reduce time-to-action, since it does not require developers to have specific NoSQL know-how. Lean and developer-friendly, but still granting high scalability and reliability.

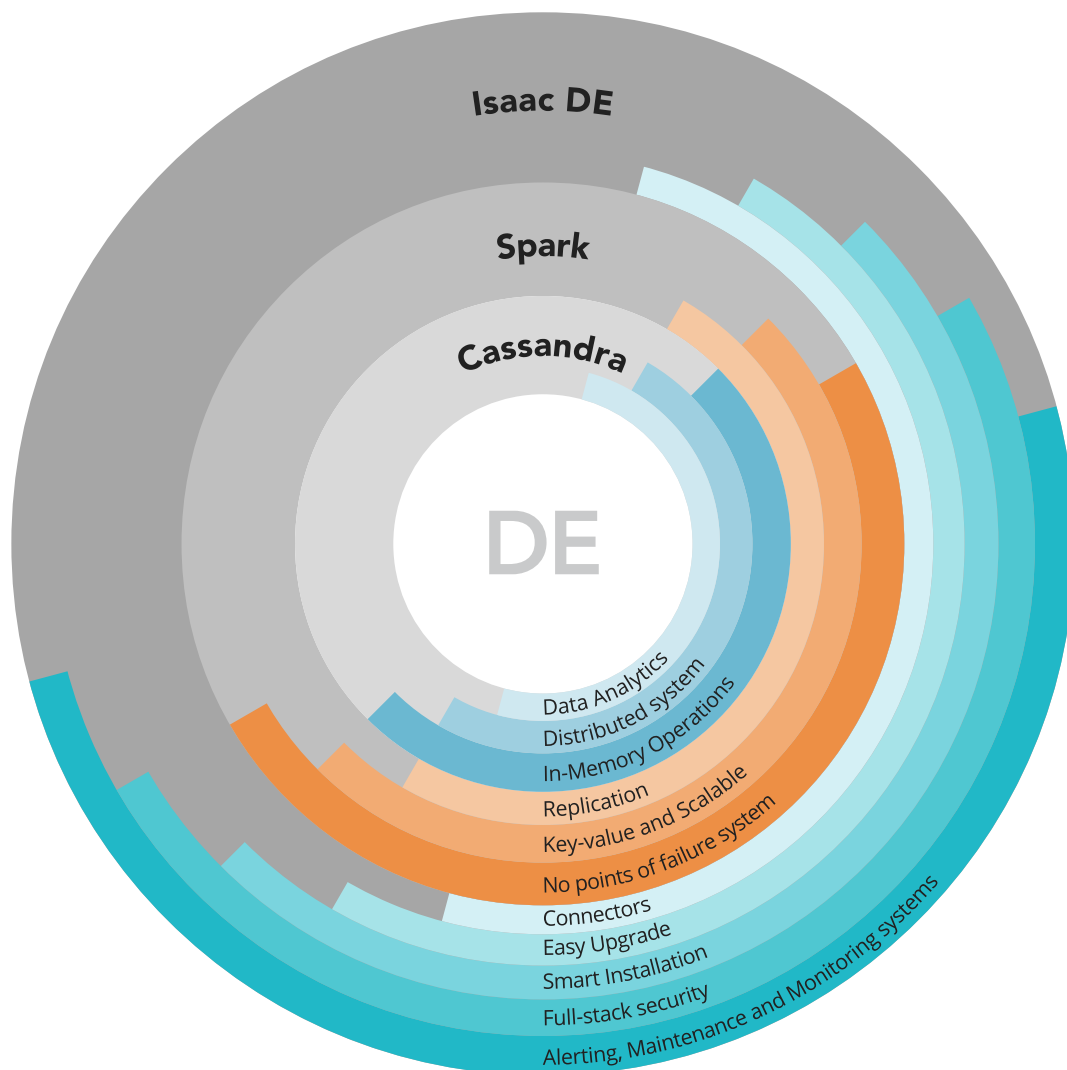
**Request now your Isaac-based POC:**

[www.isaacbigdata.com/request-your-poc](http://www.isaacbigdata.com/request-your-poc)

# Platform Overview

Isaac DE technical architecture offers extensive scalability and high performances, even in case of nodes and clusters overload.

The platform provides a distributed environment that, in addition to ensuring high reliability, allows the user to have at his disposal an easily scalable system, in which to increase performances you will only need to increase the number of nodes directly from the codeless interface, through the add node functionality.

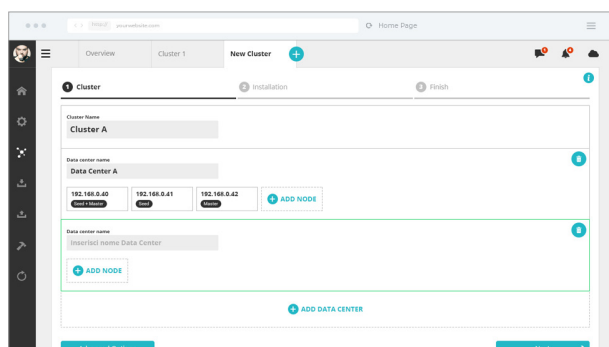


A single platform that provides a distributed environment easy to configure install and manage, thanks to the codeless interface. **User friendly tools are included, for the monitoring of the entire Big Data enviroment through the smart alerting configurator.**

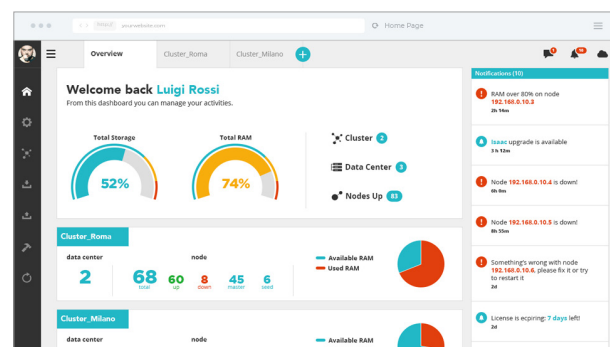
Isaac DE Technologies



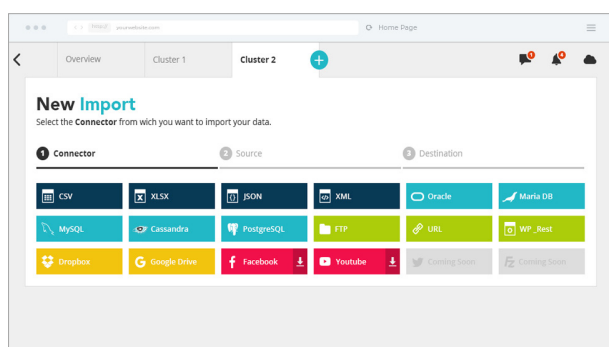
# Platform Overview



The purpose of Isaac is to simplify user's work: thanks to the smart installation and configuration tool, it will be possible, via web interface, to build within a few steps a Cassandra + Spark Cluster. You won't need to have specific preliminary skills: a wizard will guide you through the process. The system will take care of operations while the user will always have visibility of what will be installed on the servers. The initial configuration will be basic and the wizard asks the essential questions to the new user; there is also an utility that allows an advanced configuration, for the most experienced users.



With the smart monitoring tool, the system administrator has at its disposal a dashboard from which to verify in Real Time the status of the cluster in terms of hardware, performance, load of the nodes, operations carried out and much more, thanks to interactive graphs and tables. It can also perform browser maintenance operations without the need to access the machines directly. You can also restart a Cassandra node. There are configurable SMTP to receive alerts in case a node falls or the disk space runs low.



Dynamic connectors allow to import and export data from and to other data sources or applications. Isaac DE also allows the user to build customizable data sources depending on business needs.

# Isaac DE features

## Cluster Manager

Isaac DE simplifies the user experience: thanks to the installation and configuration tool it is possible to build an entire cluster within a few steps, all through web interface.



## Smart DB Builder

Isaac DE helps the user in the physical creation of a schema and it also gives useful suggestions to design the architecture of your database.



## Smart Query Builder

Allows the creation of queries without any need to write code lines. A guided procedure helps the user to optimize the final query and obtain the best performances.



## Visual Monitoring

Isaac DE provides its users with an interactive infrastructure monitoring dashboards: the graphs provide a complete and intuitive overview of the status of the platform.



## Multi Data Center

Isaac DE allows the creation of distributed ecosystems. Replication of data on dislocated data centers is made possible to ensure safety and reliability.



## Real Time Maintenance

From Isaac DE interface it is possible to perform maintenance operations from the browser, without the need for direct access to the machines.



## Backup & Restore

This feature allows to manage the history of backups, to back up on every single node and to transfer the backup files to an external host.



## Dynamic Connectors

Along with the entire infrastructure, Isaac DE provides dynamic connectors to import data from external sources, such as other Databases and Files, Cloud and Social.



## User Manager

Isaac DE is based on users and roles in order to define security levels: the users for entering the application are automatically integrated with roles and permissions on the database.



## How Isaac DE can help: use cases



### Delivering of relevant customer experiences

Regardless of data volume, Isaac DE is able to collect in Real Time all data about clients behaviours, location and preferences. This will allow you to deliver more functional, tailored experiences to costumers, as well as create a loyal bonding with your enterprise.



### Detection of risk and frauds

With Isaac DE, you will be able to instantly detect patterns and anomalies within your business by comparing Real Time actions to historical data and behaviours. This will allow you to ensure your business and customer safety, while eliminating fraud risks.



### Smart Management of inventory systems

Isaac DE offers a complete and Real Time overview of inventory catalogs and services, allowing you to grant customers fast access and better experiences. The platform is able to grant always-on services, while scaling to millions of products and thousands of requests per second.